

Having Surgery?



Get Better FASTER with
Polar Care Kodiak[®]
Cold Therapy

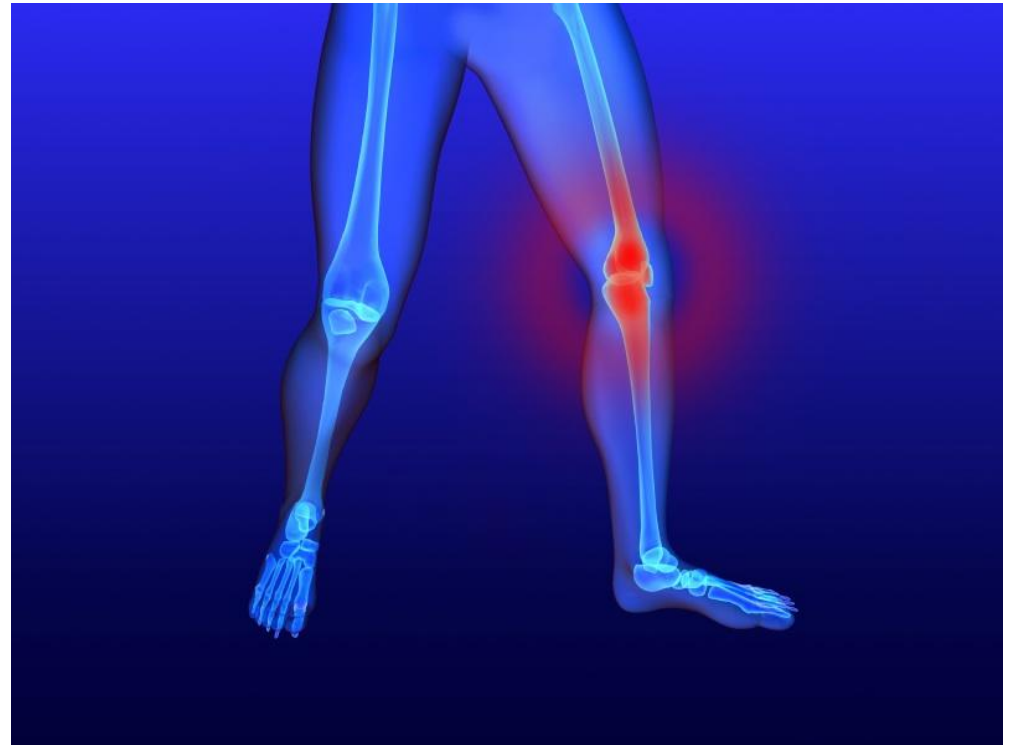
Did You Know?

Polar Care Kodiak cold therapy is one of the most effective ways to treat post-operative pain and swelling.



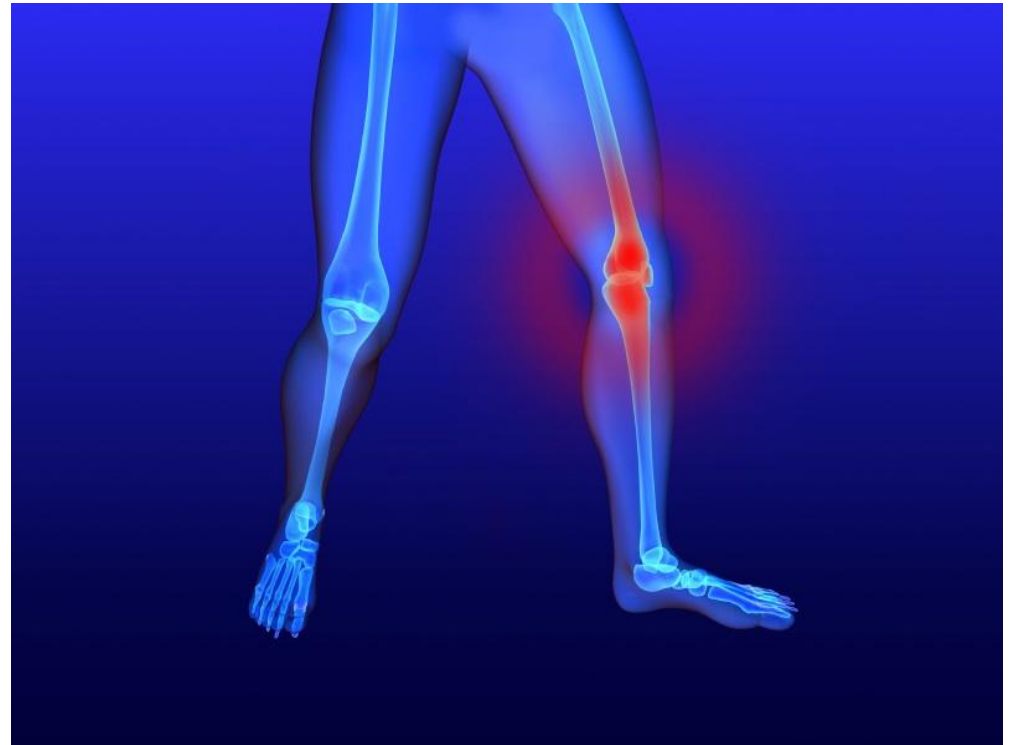
The Physiologic Response

Pain and swelling resulting from orthopedic injury or surgery negatively affects the healing process resulting in longer healing times.



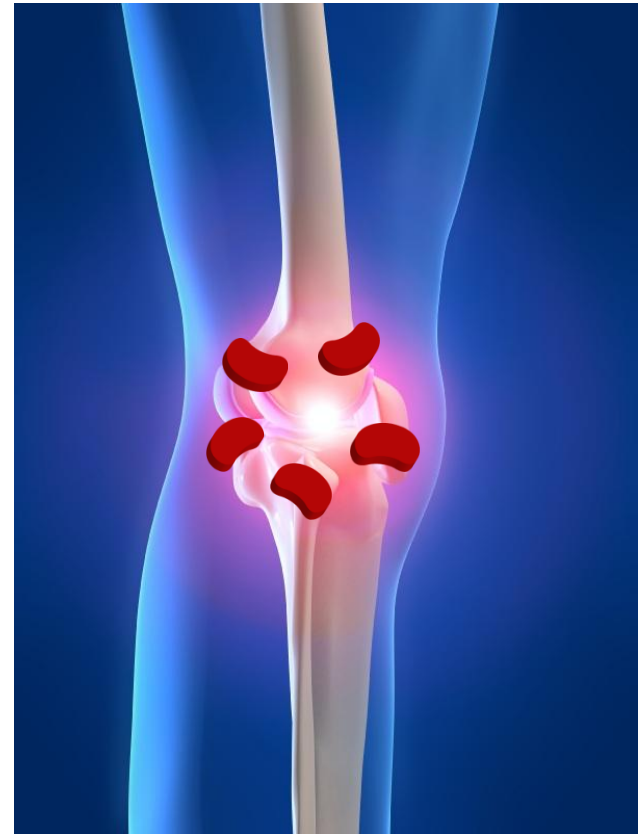
The Physiologic Response

Swelling also results in decreased range of motion and muscle spasm, inhibition and atrophy.



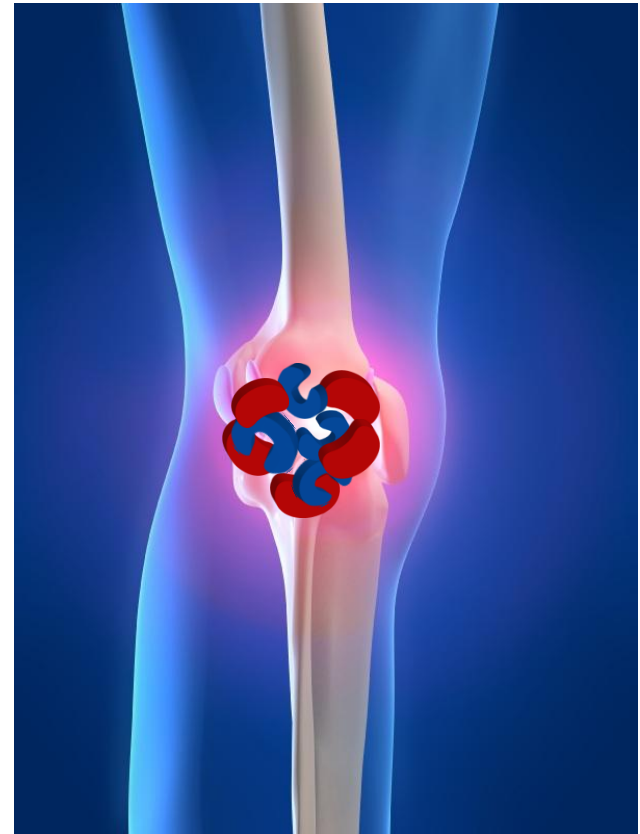
The Inflammatory Process

Upon injury, **healthy cells** rush to the injury site to aid in the healing process.



The Inflammatory Process

As the cells repair the injury site, they compete with the **damaged cells** for oxygen and nutrients.



The Inflammatory Process

This competition between healthy and damaged cells causes healthy cells to die (Secondary Hypoxic Cell Injury).



The Inflammatory Process

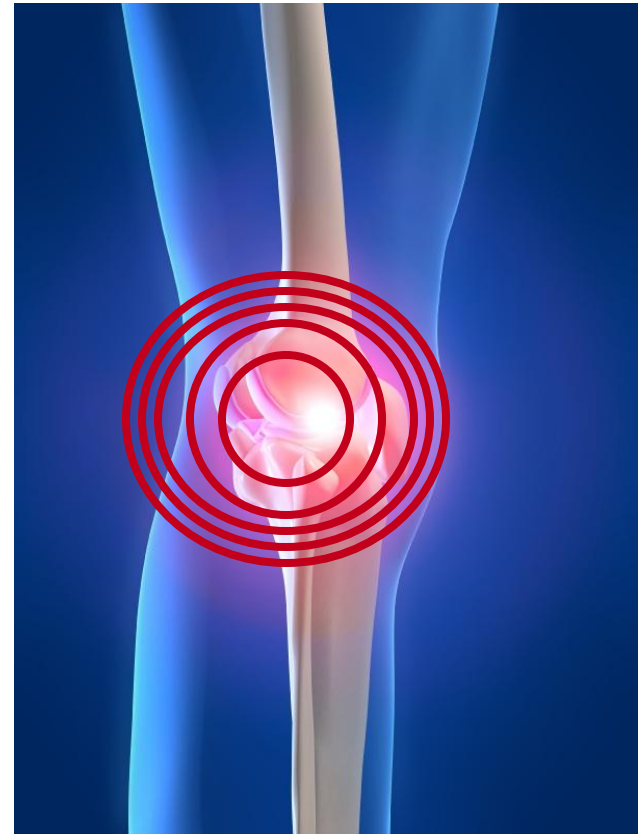
Cell death results in increased blood accumulation and bleeding at the injury site.



The Inflammatory Process

This process
causes:

- Swelling
- Increased pain
- Prolonged healing



The Inflammatory Process

Pain is the result of the body's chemical response to cell death, along with increased pressure on the nerve endings caused by swelling.



The Inflammatory Process

This vicious cycle of pain and inflammation will continue until it is interrupted.



The Inflammatory Process

Cold therapy helps combat the inflammatory process and reduce pain. Ice is only safe for brief periods, resulting in lack of sustained pain relief.



The Inflammatory Process

Prolonged application of cold is the best way to interrupt this cycle.
Polar Care Kodiak cold therapy provides prolonged pain relief.



What is Polar Care Kodiak Cold Therapy?

Polar Care Kodiak cold therapy delivers ice water through circulation pads specifically designed for different body parts. This maximizes the healing process.



What is Polar Care Kodiak Cold Therapy?

By using Polar Care Kodiak cold therapy, patients can receive longer-term cold therapy according to their physician's prescribed treatment protocol within a certain temperature range.



What is Polar Care Kodiak Cold Therapy?

The Polar Care Kodiak cold therapy **unit** will typically maintain its cold for 6-11 hours per ice change.

*Cold Therapy may help you sleep through the night.

Check with your doctor regarding your treatment protocol (including *duration of use, skin inspection, frequency of use and instructions).



What is Polar Care Kodiak Cold Therapy?

The water-circulating pads are designed to fit a specific of body parts, and are cleaner and easier to use than messy ice or gel packs.



What is Polar Care Kodiak Cold Therapy?

This enables an easier recovery and eliminates frequent trips to the freezer.



Why is Cold Therapy Effective?

Cold therapy helps to:

- Decrease pain
- Reduce muscle spasm
- Lessen swelling and edema
- Diminish initial inflammatory response
- Minimize secondary hypoxic cell injury



Polar Care Kodiak Cold Therapy

Simple

Easy to use
Minimal set up

Quiet

Advanced technology for
whisper-quiet performance

Reliable

Robust motor for optimal durability

Dependable

Superior filtration system
prevents clogs

Compact

Lightweight, portable design
is easy to carry, fill and use



Polar Care Kodiak Intelli-Flo Pads

Consistent

Maintains consistent temperature specific to each treatment area

Customized Temperature Control

Specifically designed for each body part



Comfortable

Ergonomic design

Durable

Constructed of premium materials



Polar Care Kodiak Intelli-Flo Pads



Intelli-Flo Knee Pad



Intelli-Flo Shoulder Pad



Intelli-Flo Ankle Pad

Get Better Faster

Make Polar Care Kodiak cold therapy a part of your post surgical treatment. Talk to your doctor today.

A prescription is required to order a BREG Polar Care Kodiak cold therapy unit. Talk to your doctor about your medical history and whether a cold therapy unit is right for you. The Polar Care Kodiak system can be cold enough to seriously injure the skin. It is necessary to use an insulation barrier between the Intelli-Flo pad and the skin to prevent cold injury.



Get Better Faster

Learn more about BREG's Polar Care Kodiak cold therapy unit and place an order by visiting:

www.myColdTherapy.com

Please note: A prescription is required to order a BREG Polar Care Kodiak cold therapy unit.

© 2010 BREG, Inc. All rights reserved. 0210

Kodiak is a registered trademark of BREG, Inc.

